

# Ministry Directory

Fall Edition 2023

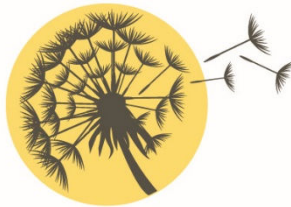


# WELCOME

---

## TO WAUKESHA BIBLE CHURCH

Please allow this Ministry Directory to serve as a guidebook as you navigate life and ministry at WBC. Within this resource you will find a variety of courses and small groups to participate in, ministries you can serve in as part of a team, and also several resources to assist you and your family personally.



**WAUKESHA BIBLE CHURCH**

GATHERED FOR WORSHIP | SCATTERED FOR MISSION



# TABLE OF CONTENTS

## WORSHIP

Worship Arts Ministry .....	1
-----------------------------	---

## INSTRUCTION

Elective Classes & Studies .....	2
----------------------------------	---

## FELLOWSHIP

Children & Youth Ministries .....	4
College & Career Ministry .....	6
Men's Ministry .....	7
Women's Ministry.....	8
Life Groups .....	9
Caring Ministry .....	10
Hospitality Ministry .....	11

## EVANGELISM

Deploy 401.....	12
Outreach Ministry.....	13

## FACILITIES

Facilities Ministry.....	14
--------------------------	----

## CONTACT INFORMATION

Church Leadership.....	15
Index of Ministry Coordinators.....	16



# WORSHIP ARTS MINISTRY

Ministry Coordinator: Mike Kee  
worshiparts@waukeshabile.org

The purpose of the Worship Arts Ministry is to help the whole congregation worship God in spirit and truth for their joy.

## **WORSHIP BAND | Team Leader: Mike Kee**

The Worship Band serves the entire congregation in corporate worship. Team members offer their musical ability to lead the body as we experience corporate worship together.

## **CHOIR | Team Leader: Mike Kee**

Choir is an opportunity to serve the body through music as part of the corporate worship expression. The choir enhances our corporate worship in fresh ways at various times throughout the year. Practice takes place on Mondays at 6:00 PM (Sept-Dec/Feb-May).

## **MEDIA TEAM | Team Leader: Trey Braband**

The Media Team is responsible for operating the various forms of media outlets that aid in corporate worship (including song slides, sermon slides, M:60s, visual announcements before/after service, video clips, etc.).

## **SOUND TEAM | Team Leader: Mike Kee**

The Sound Team is responsible for operating the sound system to ensure that everything requiring audio enhances rather than distracts during corporate worship.

## **VIDEO PRODUCTION TEAM | Team Leader: TBD**

The Video Production team makes Sunday morning happen online for those who for various reasons cannot attend in person, from managing the livestream on YouTube to operating the cameras in the balcony.

# ELECTIVE CLASSES & STUDIES

Teaching Ministry Coordinator: Pastor Pat Griffiths  
donna@waukeshabile.org

Various classes and studies are available for the congregation to learn and grow in their faith and knowledge of God.

## SUNDAY EDUCATION HOUR

### ***Sundays at 9:00 AM***

Our 9 AM Sunday Education Hour provides an opportunity for all ages to connect for biblical instruction and fellowship. Classes take place at 9 AM before the worship service and run from September 10 through May 19.

#### ➤ **ONE STORY | ONE SAVIOR**

Our One Story | One Savior curriculum is designed to explain the biblical text by revealing the nature and character of God, the simplicity of the gospel, and how the Person and work of Jesus changes everything.

- **Kindergarten – 2<sup>nd</sup> Grade** (Room 110)
- **3<sup>rd</sup> – 5<sup>th</sup> Grade** (Room 108)
- **6<sup>th</sup> – 12<sup>th</sup> Grade** (Room 109)

#### ➤ **EQUIPPING PROCESS**

The Equipping Process is an intentional approach to encourage the fellowship to better understand the gospel and our theological distinctive. Learn more, listen to past classes, and download course materials at [waukeshabile.org](http://waukeshabile.org).

- **DISCOVER 101: Who We Are**  
**Class Dates:** Sept 10 – Oct 1
- **DEEPEN 201: What We Teach**  
**Class Dates:** Sept 10 – Dec 10
- **DEVELOP 301: When We Train**
  - **Church History – The Early Years**  
**Class Dates:** Sept 10 – Dec 10

#### ➤ **BAPTISM CLASS**

**Class Date:** Oct 8



## SATURDAY SEMINAR

### ➤ **MEMBERSHIP CLASS**

*Discover 101 is a prerequisite.*

**Class Date:** Saturday, Oct 14

## **GLORIA INSTITUTE | DEVELOP 301**

In a desire to carry out the biblical mandate of disciples making disciples, WBC offers an intentional certificate granting course of study. The classes are offered on Sunday Mornings and Wednesday Nights. Anyone may attend any of the offered classes. However, those who desire the certificate will meet with a “mentor” for discussion and input. Each class for certification requires 2-3 books read, reviews written, and one five-page typed paper on a selected topic. The intent of the certification is to identify and equip those who can serve in leadership positions and be deployed as part of our Deploy 401 Residency.

### ➤ **BIBLIOLOGY**

**Wednesdays 6:30PM – 8:00PM**

**Class Dates:** Sept 13 – Dec 13

**Location:** Auditorium

# CHILDREN & YOUTH MINISTRIES

Our various Children & Youth Ministries exist to provide a safe and caring environment for all children and teens and to equip them for life and ministry.

## **CHILDCARE | Ministry Coordinator:** Sarah Stoub

***childcare@waukeshabible.org***

Childcare is provided to give families an opportunity to have their children cared for during all services and studies held on Sunday mornings at WBC. Quality caregivers provide a safe, caring environment for children so parents may participate in the worship service or class electives. Volunteers are always needed in the following groups:

- **Babyland** (birth to 6 months)  
**Location:** Room 242
- **Toddletown** (6 months to 3 years)  
**Location:** Room 237
- **Kid City** (3-5 years)  
**Location:** Room 233

## **AWANA (CHILDREN) | Ministry Coordinator:** Ashley Boschert

***awana@waukeshabible.org***

Awana provides families an opportunity for their children to be exposed to the gospel through interactive Bible lessons, vibrant song time, and memorization of Bible verses. A variety of activities take place throughout the year to engage the entire family.

Awana meets on Thursdays from 6:30-8:00 PM, starting October 5, 2023 and running through April 2024. For more information, email Ashley at [awana@waukeshabible.org](mailto:awana@waukeshabible.org).

## **LIMITLESS (YOUTH) | Ministry Coordinator: Steve Helm** ***youth@waukeshabible.org***

Limitless provides families an opportunity for their teens (6<sup>th</sup>-12<sup>th</sup> grade) to connect peer-to-peer on a weekly basis for worship, interactive study of the Biblical text, and experience community through small group. A variety of activities, events, and service opportunities take place throughout the year to engage the entire family. Limitless meets September – May.

- **Sundays** 9:00-9:45 AM  
**Location:** Room 109 (Lower Level)
- **Wednesdays** 6:30-8:00 PM  
**Location:** Connector Room (Lower Level)

# COLLEGE & CAREER MINISTRY

Ministry Coordinators: TBD  
[college@waukeshabile.org](mailto:college@waukeshabile.org)

The College and Career Ministry seeks to foster Christ-centered relationships and community for recent high-school through recent college grads (18 to mid-20s) – whether you are currently in school or out in the work force. This community is a place where these individuals can discuss faith and life issues as well as become connected and engaged with the church family as a whole.

## WEEKLY GROUP & MONTHLY OUTINGS

Join us on Sundays (September – May) at 6 PM for dinner, a discussion of the sermon, and games and fellowship with other college-aged men and women. Location for Fall 2023 yet to be determined. We also get together for other events and activities throughout the year!

Email [college@waukeshabile.org](mailto:college@waukeshabile.org) for more information.

## CARROLL U 3:30 MINISTRY

The 3:30 Ministry at Carroll University was founded on the verse John 3:30, “He must become greater and I must become less.” Both women’s and men’s bible studies are available and meet on Monday nights on the Carroll University campus.

### WOMEN’S BIBLE STUDY

**Day & Time:** TBD Fall 2023

**Location:** Carroll University Education Hall

**Contact:** Hannah Shady | [threethirtywomensministry@gmail.com](mailto:threethirtywomensministry@gmail.com)

### MEN’S BIBLE STUDY

**Day & Time:** TBD Fall 2023

**Location:** Carroll University Education Hall

**Contact:** Connor Shady | [threethirtymensministry@gmail.com](mailto:threethirtymensministry@gmail.com)

# MEN'S MINISTRY

Ministry Coordinator: Pastor Giles Litzner (Interim)  
mensministry@waukeshabile.org

Men's Ministry provides a variety of opportunities for men to connect shoulder-to-shoulder. Whether it's working on a project, helping people move, hiking/camping, ice fishing, game nights, or Bible studies, Men's Ministry simply provides options for men to journey together interdependently.

## **BIBLE STUDY | Team Leaders: Jim Guyette & Pastor Pat Griffiths** **Fridays 8:00 AM (Sept-May)**

Our small group Bible study is a great place for men to connect for biblical study and encouragement. We will be studying Hebrews beginning Sept 15, 2023.

## **MONTHLY BREAKFASTS | Team Leader: Pastor Pat Griffiths** **First Saturday at 8:00 AM (unless otherwise noted)**

For men of all ages. Join us each month for fellowship, a testimony, and a point of interest over breakfast.

## **WEEKLY SPORTS | Team Leader: Aaron Cutshall**

### **Men's Basketball**

#### ***Mondays at 6:15 PM (September – April)***

For men and boys ages 14+. Join us for pick-up games of basketball in the gym.

### **Ultimate Frisbee**

#### ***Mondays at 6:15 PM (May – August)***

For men and women ages 13+. Join us for pick-up games of ultimate frisbee outdoors in the field.

# WOMEN'S MINISTRY

Ministry Coordinator: Women's Council  
[womensministry@waukeshabile.org](mailto:womensministry@waukeshabile.org)

Women's Ministry is designed to equip and encourage the women of WBC so that they grow in the grace of Christ. The Women's Ministry is overseen by the Women's Council and provides opportunities for women to connect through events and various small groups.

The purpose of the Women's Council is to journey with and care for the women of our fellowship. If you need prayer, encouragement, connection, or community, please reach out to any of the team individually or through the council email: [womenscouncil@waukeshabile.org](mailto:womenscouncil@waukeshabile.org).

**Women's Council:** Claudette Ahlgren, Wendy Kee, Janel Litzner, Julie Pofahl, and Jane Stern

**BIBLE STUDY | Team Leaders:** Angela Ketterhagen & Donna Siegesmund  
Our small group Bible study is a great place for women to connect for biblical study and encouragement.

**Upcoming Study:** *The Book of Hebrews*

**Day & Time:** Wednesdays at 9:30 AM beginning Sept 13, 2023

**OR** Thursdays at 6:30 PM beginning Sept 14, 2023

**Instructors:** Donna Siegesmund (Wed) & Angela Ketterhagen (Thu)

**SEWING & CRAFTS GROUP | Team Leader:** Claudette Ahlgren  
**1<sup>st</sup> & 3<sup>rd</sup> Thursday at 9:30 AM**

Bring your current project and connect with others!

**MOM GROUP | Team Leaders:** Julie Pofahl & Janel Litzner  
**First Tuesday at 6:00 PM**

Join us for an evening of fellowship and a chance to connect as moms. Location offsite. Contact [womenscouncil@waukeshabile.org](mailto:womenscouncil@waukeshabile.org) for location.

**PLAYDATE GROUP | Team Leader:** Megan Goodwin  
**Wednesdays from 10 AM to 12 PM**

Bring your child(ren) to play while you connect with other parents. Meets in Kid City in the southeast hallway.

## **LIFE GROUPS**

Ministry Coordinators: Michael & Rachel Donaghy  
[lifegroups@waukeshabile.org](mailto:lifegroups@waukeshabile.org)

Life Groups are a good way to make a larger church seem small. Join a group to your liking: similar stage in life, kids or no kids, cross-generational. Some are centered around fellowship and activities. Others might do in-depth Bible Study or to simply read large portions of Scripture together. Some may venture out on a service project. There's something for everyone.

If you are interested in joining, hosting, or facilitating a Life Group, please contact us at [lifegroups@waukeshabile.org](mailto:lifegroups@waukeshabile.org).

## CARING MINISTRY

Ministry Coordinator: Pastor Giles Litzner  
pastorgiles@waukeshabile.org

Life on the horizontal is a glorious mess. Since the church is not immune to the brokenness, the following ministries coordinate their efforts to best serve our church family to meet the variety of needs.

### **STEPHEN MINISTRY TEAM | Team Leader:** Chris Bykowski

Stephen Ministry is a team of trained lay leaders who provided one-to-one care for those in our fellowship experiencing crisis. Trained Stephen Ministers will serve in connection with the Deacons and Elders to provide quality care over an extended period of time to ensure shepherding needs are cared for and not overlooked. If you or someone you know within our fellowship could benefit from a Stephen Minister, please reach out to this team by connecting with one of the team members or by emailing [stephenministry@waukeshabile.org](mailto:stephenministry@waukeshabile.org).

**Stephen Ministers:** Trey Braband, Chris Bykowski, Jim and Judy Guyette, Jan Nickels, Christina Jensen, Dale Kuehn, Pat Quindt, Linda Muszytowski, and Pastor Giles Litzner

### **GRIEFSHARE TEAM | Team Leaders:** Pat Quindt

Have you lost someone you love dearly? You don't have to go through the grieving process alone. GriefShare is a friendly, caring group of people who will journey with you as you experience the difficult challenges and seasons of grief. The GriefShare small group is led by trained lay leaders who facilitate a 13-week video course and small group discussion. If you have lost a loved one, please consider joining this small group. If you have any questions, please contact us at [griefshare@waukeshabile.org](mailto:griefshare@waukeshabile.org).

**Start Date:** TBD

**Day & Time:** Wednesdays, 1:00-3:00pm

**Location:** Room 202 (Conference Room)

**GriefShare Facilitators:** Pat Quindt, Claudette Ahlgren,



# HOSPITALITY MINISTRY

Ministry Coordinator: WBC Office  
office@waukeshabile.org

The Hospitality Ministry seeks to provide a welcoming atmosphere as we gather for worship and fellowship.

## **USHER TEAM | Team Leader:** Forrest Johnson

The Usher Team helps support and maintain a proper atmosphere that promotes corporate worship. By helping people find seats, locate classrooms, navigate the facilities, handing out the bulletin, and attending to a variety of needs that arise, Ushers help create an environment in which people feel cared for and “at home” in our fellowship.

## **GREETER TEAM | Team Leader:** Jodie Elroy

The Greeter Team helps create an excellent first impression for people attending Waukesha Bible Church by welcoming people warmly, helping them navigate as a visitor, answering questions, and connecting them with others in our fellowship who will continue to demonstrate to them the love of Christ as they attend our worship service.

## **KITCHEN TEAM | Team Leader:** Angela Ketterhagen

The Kitchen Team serves the fellowship of Waukesha Bible Church by providing quality food service for potluck fellowships and funeral services. We could always use an extra set of hands...as long as they're washed 😊.

## **DECORATING TEAM | Team Leader:** Gladys Freitag

The Decorating Team beautifies the Auditorium with seasonal and holiday decor and floral arrangements.

## **PRAYER TEAM | Team Leader:** WBC Office Staff

The Prayer Team serves our fellowship after the worship service by praying for and with any who come to the front needing prayer.

# DEPLOY 401

Ministry Coordinators: Pastor Pat Griffiths & Pastor Giles Litzner  
[pastorgiles@waukeshabible.org](mailto:pastorgiles@waukeshabible.org)

Deploy 401 is the intentional process by which we develop pastoral residents to either pastor an existing church or plant a new church locally or nationally that bear our Theological Distinctives. This is the final phase of our Equipping Process (see page 3 for a full description).

As a church, we are fully convinced of the Vision of God (Isaiah 11:9) and Mission of God (Matthew 28:19-20). Therefore, our passion and energy align to pursue the mission by equipping individuals who can pastor an existing church or plant a new church. Our goal is to build a network of churches that are replicating this process with our Theological DNA.

## **Pastoral Residency (2-year program)**

The Pastoral Residency (previously known as our internship) is for individuals who desire to receive practicum training in pastoral ministry. The pastoral resident will work closely with our pastors and elders through an intentional curriculum of theological training, leadership development, ministry responsibilities, teaching and preaching opportunities, and a variety of pastoral responsibilities.

The intent of the residency is to learn how to pastor from the inside out, with an end result of either stepping into a lead pastoral role in an existing church or to plant a new church. The residents we invest in will continue to network with Waukesha Bible Church in order to replicate the process in order for the mission to advance.

## **Summer Internship**

The Pastoral Internship is a new program we are starting as a pre-residency program. The summer internship will focus exclusively on equipping the participants with our Theological DNA and training in pastoral responsibilities that happen in the “classroom of life.” The internship gives both the participant and our leadership an opportunity to invest and determine if the intern would be a good fit in our Pastoral Residency program.

To learn more, pick up our Deploy 401 booklet from the foyer or online at <http://waukeshabible.org/deploy401.htm>, or reach out directly to Pastor Giles at [pastorgiles@waukeshabible.org](mailto:pastorgiles@waukeshabible.org).

## OUTREACH MINISTRY

Ministry Coordinator: Pastor Giles Litzner  
pastorgiles@waukeshabile.org

Our Outreach Ministries aim to reach out to our Waukesha community to serve those in need.

### **HEARTS TO HANDS | Team Leader:** Pat Quindt

The purpose of the Hearts to Hands Ministry is to reach out to our Waukesha community to serve those in need. Hearts to Hands coordinates regular collections of donations for local organizations.

### **CHOSEN, INC. | Team Leaders:** Jason & Mali Bowling

Chosen supports foster and adoptive families through *The Family Closet* and offers community education on various adoption and fostering related topics. If you would like to volunteer with *The Family Closet*, the *Friends of Chosen Walk*, or the annual Gala, please see their booth for more information or visit them at [choseninlove.org](http://choseninlove.org).

# **FACILITIES MINISTRY**

Ministry Coordinator: Aaron Cutshall  
aaron@waukeshabible.org

Maintenance opportunities are available in a variety of areas around the facilities of Waukesha Bible Church. Whether you're handy with a hammer or have a "green thumb," we would love to utilize your gifts and strengths.

## **GREEN TEAM | Team Leader: TBD**

The Green Team maintains the gardens and landscaping around the building and grounds.

## **MOWING TEAM | Team Leader: Aaron Cutshall**

The Mowing Team mows all the fields and grassy areas of WBC over the summer months.

## **SNOW REMOVAL TEAM | Team Leader: Aaron Cutshall**

The Snow Removal Team assists in plowing the parking lot when needed over the winter months.

## **CLEANING TEAM | Team Leader: Aaron Cutshall**

The Cleaning Team assists in various cleaning duties around the building, such as taking out the trash and recycling, vacuuming, and dusting.

## **SAFETY & SECURITY TEAM | Team Leader: Jason Downing**

The Safety & Security Team exists to maintain the security of our building and the safety of our fellowship on Sunday mornings.

# CHURCH LEADERSHIP

## **ELDERS | Elder Chairman:** Mike Davis

***elders@waukeshabible.org***

The Elder council of Waukesha Bible Church consists of a plurality of men whose prime directive is to ensure every ministry, message, study, etc. bears the mark of our Theological Distinctive ("DNA"). Our Theological DNA is the centrality of the gospel and its implications both vertically and horizontally as we teach the biblical text and interact with people. Elders teach, shepherd, pray, and lead from a position of grace and posture of humility. If we can serve you in any way, please feel free to contact us by emailing [elders@waukeshabible.org](mailto:elders@waukeshabible.org).

**Elder Council:** Mike Davis, Lawrence Elroy, Pastor Pat Griffiths, Joe Herriges, Mike Kee, Pastor Giles Litzner, and Chris Pofahl

## **DEACONS | Deacon Chairman:** Ty Ketterhagen

***deacons@waukeshabible.org***

The Deacons of Waukesha Bible Church consists of a plurality of men and women whose prime directive is to serve this fellowship in areas of benevolence, whether the need is service or financial. Serving in areas of benevolence and administration frees the Elders to focus on word, prayer, and shepherding. If we can serve you in any way, please feel free to contact us by emailing [deacons@waukeshabible.org](mailto:deacons@waukeshabible.org).

**Deacon Council:** Aaron Cutshall, Laura Helm, Steve Helm, Christian Jensen, Angela Ketterhagen, Ty Ketterhagen, and Dave Schoettel

# MINISTRY COORDINATORS

Awana (Children) .....	Ashley Boschert .....	awana@waukeshabible.org
Childcare .....	Sarah Stoub .....	childcare@waukeshabible.org
College/Career .....	TBD .....	college@waukeshabible.org
Facilities Ministry .....	Aaron Cutshall .....	aaron@waukeshabible.org
GriefShare .....	Pat Quindt .....	griefshare@waukeshabible.org
Hospitality Ministry .....	.....	office@waukeshabible.org
Life Groups .....	Michael & Rachel Donaghy ..	lifegroups@waukeshabible.org
Limitless (Youth) .....	Steve Helm .....	youth@waukeshabible.org
Men's Ministry .....	Giles Litzner .....	mensministry@waukeshabible.org
Outreach Ministry .....	Giles Litzner .....	pastorgiles@waukeshabible.org
Stephen Ministry .....	Chris Bykowski ..	stephenministry@waukeshabible.org
Teaching Ministry .....	Patrick Griffiths .....	donna@waukeshabible.org
Women's Ministry .....	Team Effort .....	womensministry@waukeshabible.org
Women's Council .....	Team Effort .....	womenscouncil@waukeshabible.org
Worship Arts .....	Mike Kee .....	worshiparts@waukeshabible.org





WAUKESHA  
BIBLE CHURCH

(262) 542-7177

[www.waukeshabible.org](http://www.waukeshabible.org)